



fitted with  
work equipment  
connected load  
power consumption  
luminous flux  
luminous efficacy  
light distribution  
light color  
color rendering index (CRI)  
system of protection  
class of protection  
technology  
usage  
luminaire body  
lamp cover  
weight (net)  
mains supply

design  
fastening  
dimension

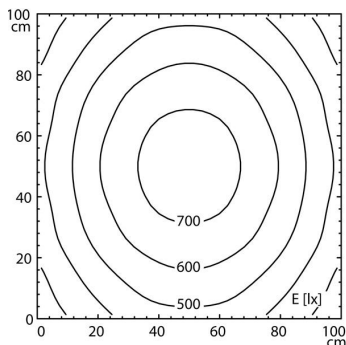
LED  
without  
20-28V; DC  
approx. 17 W  
approx. 1250lm  
approx. 73 lm/W  
direct, wide-angled beam  
neutral white, approx. 5000 K  
> 70  
IP 65  
III  
switchable  
external  
aluminium, anodized, aluminium colored anodized  
screen, clear  
approx. 0.8 kg (1.76 lb)  
built-in plug  
M12 4-pole A-coded  
mounted version  
L-angle, clamp  
A=540 mm (21.3 in)



M12 4-pole A-coded

illuminance

distance: 100 cm  
Em: 524 lx  
Emax: 741 lx  
Emin: 286 lx



luminous intensity

