

fitted with
work equipment
connected load
power consumption
luminous flux
luminous efficacy
light distribution
light color
system of protection
class of protection
technology
usage
luminaire body
lamp cover
weight (net)
mains supply

design
fastening
dimension

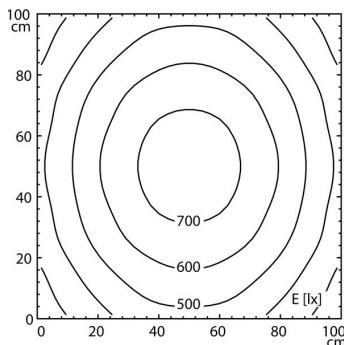
LED
without
20-28V; DC
approx. 17 W
approx. 340lm
approx. 20 lm/W
direct, wide-angled beam
red, 625nm
IP 65
III
switchable
external
aluminium, anodized, aluminium colored anodized
screen, clear
approx. 0.8 kg (1.76 lb)
built-in plug
M12 4-pole A-coded cord (optional)
surface-mounted
adjustable endcap (optional)
A=540 mm (21.3 in)



M12 4-pole A-coded

illuminance

distance: 100 cm
Em: 524 lx
Emax: 741 lx
Emin: 286 lx



luminous intensity

