

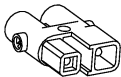


fitted with

work equipment
connected load
power consumption
luminous flux
luminous efficacy
light distribution
light colour
color rendering index (CRI)
system of protection
class of protection
usage
luminaire body
weight (net)
mains supply

fastening
dimension
light output
outside diameter
side part
special features

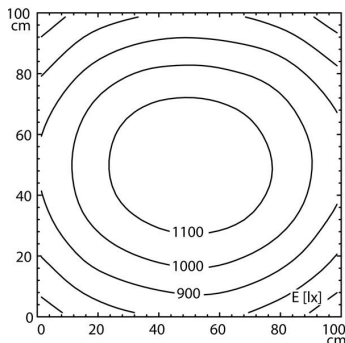
LED
Energy efficiency category A+
without
22-26 V; DC
approx. 50 W
approx. 3800 lm
approx. 76 lm/W
direct
neutral white, approx. 5000 K
> 80
IP 67
III
external
borosilicate glass,
approx. 4.4 kg, 9.7 lb
built-in plug
ST16/2 BS
pipe clamp (accessory)
A=1210 mm, 47.6 in
D=1156 mm, 45.5 in
70 mm, 2.75 in
A with screwed cable gland
light forming



ST16/2 BS

illuminance

distance: 100 cm
Em: 968 lx
Emax: 1190 lx
Emin: 697 lx



luminous intensity

