

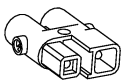


fitted with

work equipment  
connected load  
power consumption  
luminous flux  
luminous efficacy  
light distribution  
light colour  
color rendering index (CRI)  
system of protection  
class of protection  
usage  
luminaire body  
weight (net)  
mains supply

fastening  
dimension  
light output  
outside diameter  
side part  
special features

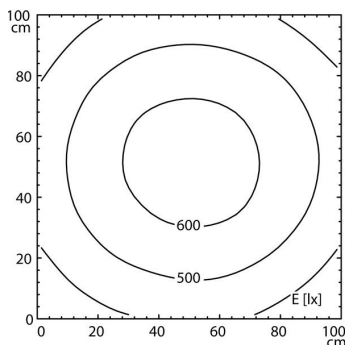
LED  
Energy efficiency category A+  
without  
22-26 V; DC  
approx. 25 W  
approx. 1900 lm  
approx. 76 lm/W  
direct  
neutral white, approx. 5000 K  
> 80  
IP 67  
III  
external  
borosilicate glass,  
approx. 2.5 kg, 5.51 lb  
built-in plug  
ST16/2 BS  
pipe clamp (accessory)  
A=650 mm, 25.6 in  
D=596 mm, 23.4 in  
70 mm, 2.75 in  
A with screwed cable gland  
light forming



ST16/2 BS

illuminance

distance: 100 cm  
Em: 505 lx  
Emax: 646 lx  
Emin: 341 lx



luminous intensity

