



fitted with
work equipment
connected load
power consumption
luminous flux
luminous efficacy
light distribution
Beam Angle
light color
color rendering index (CRI)
system of protection
class of protection
technology
usage
luminaire body
lamp cover
weight (net)
mains supply

design
fastening
dimension
special features

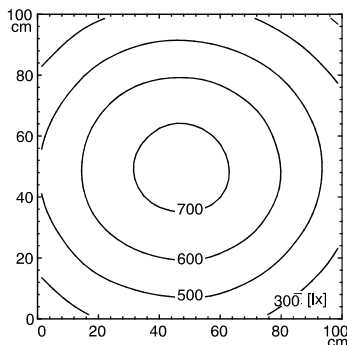
LED
without
20-28V; DC
approx. 16 W
approx. 1680 lm
approx. 105 lm/W
direct, wide-angled beam
90°/100°
neutral white, approx. 5000 K
> 80
IP 67
III
switchable
external
aluminium, anodized, aluminium colored anodized
screen, clear
approx. 0.8 kg (1.76 lb)
built-in plug
M12 4-pole A-coded
mounted version
L-angle, clamp
A=540 mm (21.3 in)
angle of illumination 90°, through-wired



M12 4-pole A-coded

illuminance

Comment: d=100cm
Em: 541 lx
Emax: 732 lx
Emin: 326 lx



luminous intensity

