

## LED machine luminaire #112560000-00003069



**FLAT LED - MYAL 6 S**

lampping  
work equipment  
voltage  
protection rating  
class of protection

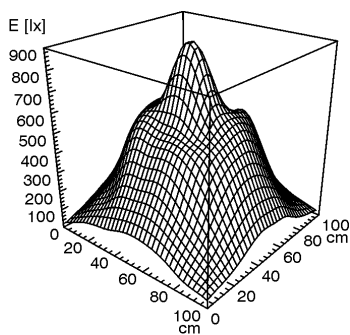
technology  
usage  
luminaire body  
lens cover

weight (net)  
cord length  
mounting

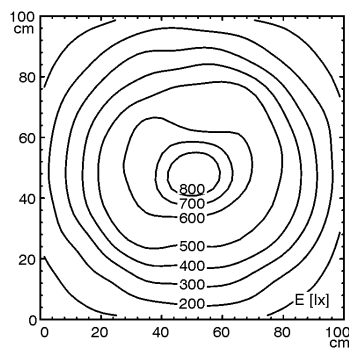
6 x 2W LED  
without  
10-40V DC  
IP67  
III

switchable  
without switch  
anodized aluminum  
borosilicate glass

approx. 2.2lb (1kg)  
approx. 10ft (3m) with 2 conductor stranded wire  
screws or optional bracket available



Emin: 49 lx  
Em: 347 lx  
Emax: 869 lx



measuring conditions: d=100cm

