



Item # \_\_\_\_\_

We put space to work.

Job \_\_\_\_\_

# Super Erecta® Designer Shelving

Metro designer color epoxy-coated shelving complements retail and grocery environments.

**Sleek Aesthetic:** Timeless wire design helps maintain focus on displayed goods.

**Adjustable:** Shelves adjust on 1" (25mm) increments to create appropriate shelf spacing for goods of differentiating heights.

**Multiple Size Options:** Available in a range of lengths, widths, and heights to fit the space.

**Versatile:** A wide range of shelving accessories available to suit your display needs.  
- Reference spec sheet 10.04, 10.05, 10.06.

**Portable & Easy to Arrange:** Shelving can be configured as stationary unit or on casters for easy movement.  
- In most cases, stationary shelving does not need to be fastened to the floor, so the display shelving can be rearranged or relocated in the future as display needs change.  
- Casters allow for easier rearrangement. Decorative casters for lightweight display needs are found on spec sheet 10.05. 5" (125mm) commercial grade casters allow more heavily loaded units to be repositioned easily, and are found on spec sheet 11.20.

**Durable:** Rugged commercial-grade shelving stands up to years of heavy use. Plated chrome and BRITE finishes and epoxy coatings are designed for dry areas.



## Shelving Color Options

Epoxy Coated



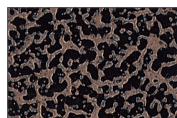
**Black (BL)**



**White (W)**

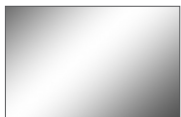


**Smoked Glass (DSG)**



**Copper Hammertone (CH)**

Plated Finishes



**Chrome Plated (C)**



**Brite (BR)**

All Metro Catalog Sheets are available on our website: [www.metro.com](http://www.metro.com)



**InterMetro Industries Corporation**  
North Washington Street, Wilkes-Barre, PA 18705  
Product Information. U.S. and Canada: 1.800.992.1776  
Outside U.S. and Canada: [www.metro.com/contactus](http://www.metro.com/contactus)

L02-012  
Printed in U.S.A. 1/21

Information and specifications are subject to change without notice. Please confirm at time of order.

Copyright © 2021 InterMetro Industries Corp.



Super Erecta® Designer Shelving

10-14



# Super Erecta Shelf® Designer Shelving

We put space to work.®

## Dimensions Shelf

Model No. Black	Model No. White	Model No. Smoked Glass	Model No. Copper Hammetone	Width/Length (in.) (mm)		Approx. (lbs.)	Pkd Wt. (kg)
1424NBL	1424NW	1424N-DSG	1424-DCH	14x24	355x610	5.3	2.4
1430NBL	1430NW	1430N-DSG	1430-DCH	14x30	355x760	6.3	2.8
1436NBL	1436NW	1436N-DSG	1436-DCH	14x36	355x914	7.5	3.4
1442NBL	1442NW	1442N-DSG	1442-DCH	14x42	355x1066	8.3	3.8
1448NBL	1448NW	1448N-DSG	1448-DCH	14x48	355x1219	9.4	4.3
1460NBL	1460NW	1460N-DSG	1460-DCH	14x60	355x1524	11.8	5.4
1472NBL	1472NW	1472N-DSG	1472-DCH	14x72	355x1825	14.4	6.5
1818NBL	1818NW	1818N-DSG	1818-DCH	18x18	457x457	5.3	2.4
1824NBL	1824NW	1824N-DSG	1824-DCH	18x24	457x610	6.1	2.7
1830NBL	1830NW	1830N-DSG	1830-DCH	18x30	457x760	7.1	3.2
1836NBL	1836NW	1836N-DSG	1836-DCH	18x36	457x914	8.2	3.7
1842NBL	1842NW	1842N-DSG	1842-DCH	18x42	457x1066	9.3	4.2
1848NBL	1848NW	1848N-DSG	1848-DCH	18x48	457x1219	10.7	4.9
1854NBL	1854NW	1854N-DSG	1854-DCH	18x54	457x1370	11.9	5.4
1860NBL	1860NW	1860N-DSG	1860-DCH	18x60	457x1524	13.4	6.1
1872NBL	1872NW	1872N-DSG	1872-DCH	18x72	457x1825	14.6	6.6
2124NBL	2124NW	2124N-DSG	2124-DCH	21x24	533x610	10.1	4.6
2130NBL	2130NW	2130N-DSG	2130-DCH	21x30	533x760	10.5	4.8
2136NBL	2136NW	2136N-DSG	2136-DCH	21x36	533x914	10.7	4.9
2142NBL	2142NW	2142N-DSG	2142-DCH	21x42	533x1066	11.5	5.2
2148NBL	2148NW	2148N-DSG	2148-DCH	21x48	533x1219	11.9	5.4
2154NBL	2154NW	2154N-DSG	2154-DCH	21x54	533x1370	12.9	5.8
2160NBL	2160NW	2160N-DSG	2160-DCH	21x60	533x1524	13.4	6.1
2172NBL	2172NW	2172N-DSG	2172-DCH	21x72	533x1825	14.4	6.5
2424NBL	2424NW	2424N-DSG	2424-DCH	24x24	610x610	6.5	3.0
2430NBL	2430NW	2430N-DSG	2430-DCH	24x30	610x760	8.3	3.8
2436NBL	2436NW	2436N-DSG	2436-DCH	24x36	610x914	10.1	4.6
2442NBL	2442NW	2442N-DSG	2442-DCH	24x42	610x1066	11.9	5.4
2448NBL	2448NW	2448N-DSG	2448-DCH	24x48	610x1219	14.2	6.4
2454NBL	2454NW	2454N-DSG	2454-DCH	24x54	610x1370	16.1	7.3
2460NBL	2460NW	2460N-DSG	2460-DCH	24x60	610x1524	18.0	8.2
2472NBL	2472NW	2472N-DSG	2472-DCH	24x72	610x1825	21.4	9.7

**NOTE:** Shelving is not cart-washable, but can be wiped down with a mild detergent.  
**NOTE:** The actual length of the shelves is 1/8" shorter than the nominal dimension shown. Actual width is 1/8" longer than the nominal dimension shown.  
**NOTE:** Not NSF listed.  
**NOTE:** Free standing 14" (355mm) wide shelving is not recommended for use with posts higher than 74". HRWBC wall brackets required for installations higher than 74".  
**NOTE:** White shelving and accessories include white split sleeves and post caps. All others come with black.

## Posts

Height* (in.) (mm)	Approx. Pkd. Wt. (lbs.) (kg)	STATIONARY				MOBILE (FOR STEM CASTERS)							
		Model No. Black	Model No. White	Model No. Smoked Glass	Model No. Copper Hammetone	Model No. Black	Model No. White	Model No. Smoked Glass	Model No. Copper Hammetone				
7 1/2	191	1/2	0.3	7PBL	7PW	7P-DSG	7-DCH	—	—	—	—		
14 1/2	370	1	0.5	13PBL	13PW	13P-DSG	13-DCH	—	—	—	—		
27 1/2	699	1 3/4	0.75	27PBL	27PW	27P-DSG	27-DCH	1 3/4	0.75	27UPBL	27UPPW	27UP-DSG	27UP-DCH
34 1/2	875	2	0.9	33PBL	33PW	33P-DSG	33-DCH	2	0.9	33UPBL	33UPPW	33UP-DSG	33UP-DCH
54 9/16	1385	3	1.4	54PBL	54PW	54P-DSG	54-DCH	3	1.4	54UPBL	54UPPW	54UP-DSG	54UP-DCH
62 9/16	1590	3 1/2	1.6	63PBL	63PW	63P-DSG	63-DCH	3 1/2	1.6	63UPBL	63UPPW	63UP-DSG	63UP-DCH
74 5/8	1895	4	1.8	74PBL	74PW	74P-DSG	74-DCH	4	1.8	74UPBL	74UPPW	74UP-DSG	74UP-DCH
86 5/8	2200	5	2.3	86PBL	86PW	86P-DSG	86-DCH	4.5	2.0	86UPBL	86UPPW	86UP-DSG	86UP-DCH

\*Height includes leveling bolt and cap.

**NOTE:** Not NSF listed.

