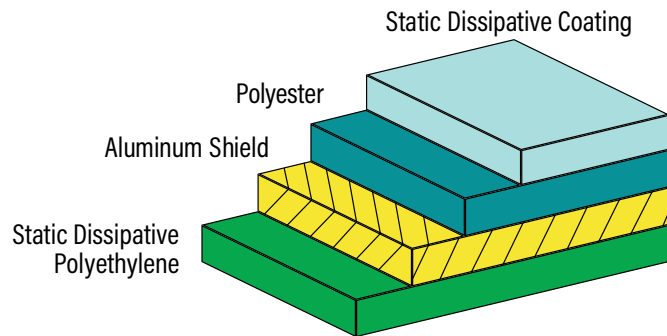
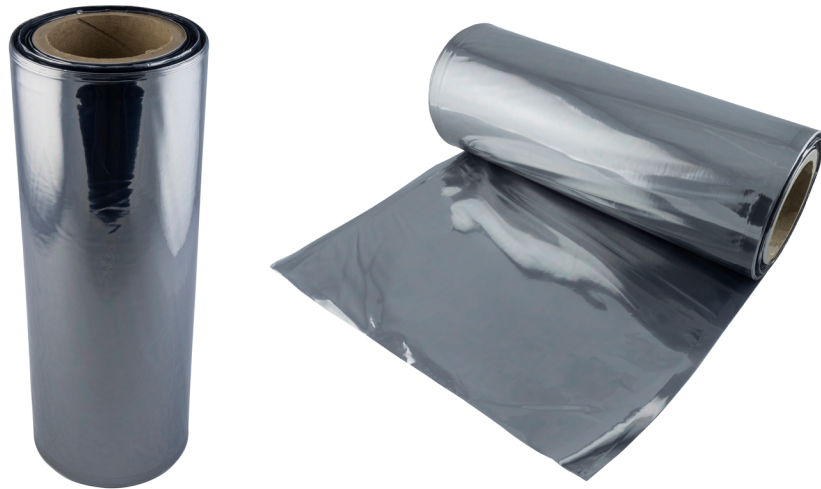


# Static Shielding Tubing 1000 Series

This transparent metal-in static shielding tubing is designed to provide a static safe environment for ESD sensitive electronic devices. The tubing is heat sealable.

SCS Static Shielding Tubing 1000 Series is manufactured from a polyester, metal, polyethylene laminate. The polyester dielectric in concert with the metal layer provides discharge shielding. The exterior being static dissipative allows electrostatic charges to be removed when grounded.



Meets ANSI/ESD S20.20, Packaging standard ANSI/ESD S541

Physical	Typical Value	Testing Method
Tensile Strength	4600 PSI, 32 MPa	ASTM D882
Puncture Resistance	12 lbs, 53 N	MIL-STD-3010C Method 2065
Thickness	2.8 mils, 0.071 mm +/-10%	MIL-STD-3010C Method 1003
Marking Adhesion	Pass	IPC-TM-650 2.4.1
Transparency	40%	Tobias
Electrical	Typical Value	Testing Method
ESD Shielding	<10 nJ	ANSI/ESD STM11.31
Surface Resistance - Interior	$1 \times 10^4$ to $< 1 \times 10^{11}$ ohms	ANSI/ESD STM11.11
Surface Resistance - Exterior	$< 1 \times 10^{11}$ ohms	ANSI/ESD STM11.11
Static Decay	< 2 seconds	MIL-STD-3010 Method 4046
Cleanliness	Typical Value	Testing Method
Silicone	Not Detected	FTIR
Heat Sealing Conditions	Typical Value	
Temperature	300°F – 375°F, 149°C – 190°C	
Time	0.5 – 3.5 seconds	
Pressure	30 – 70 PSI, 206 – 482 KPa	

Tubing is free of amines, silicones and heavy metals.

Stock Item Numbers	Roll Size
<a href="#">1000V 6X750</a>	6" x 750'
<a href="#">1000V 8X750</a>	8" x 750'
<a href="#">1000V 12X500</a>	12" x 500'

*\*Custom sizes available*

Tolerance: Width  $\pm 1/8"$ ; Length  $\pm 10\%$   
 Unless otherwise noted,  $\pm 10\%$

### RoHS, REACH, and Conflict Minerals Statement

See the SCS Regulatory Statement:  
[StaticControl.com/pdf/Regulatory\\_Statement\\_SCS\\_Bags.pdf](http://StaticControl.com/pdf/Regulatory_Statement_SCS_Bags.pdf)

See the SCS Limited Warranty:  
[StaticControl.com/Limited-Warranty.aspx](http://StaticControl.com/Limited-Warranty.aspx)

Specifications and procedures subject to change without notice.



## 1000 SERIES STATIC SHIELDING TUBING ROLL

**DRAWING NUMBER**  
 1000 Tubing Roll

**DATE**  
 November 2021

