



Made in the
United States of America

6900 Interlocking Tile - Installation Guide

6900 Floor Tile Basics

6900 Floor Tile is a 23.75" x 23.75" vinyl modular conductive interlocking tile available with a 24" x 2.5" interlocking transition strip and 2.5" x 2.5" corners. Due to the large size of the tiles, when estimating a job, a general waste or contingency factor of 5%-10% is normal. Actual waste factors will vary based on job size, layout, installation experience and other factors. A plastic tipped mallet or deadhead hammer should be used for joining these products. The use of a cutting tool will be required for cutting around obstacles. 6900 Floor Tile is designed to be a free-lay system and does not generally require use of adhesives.

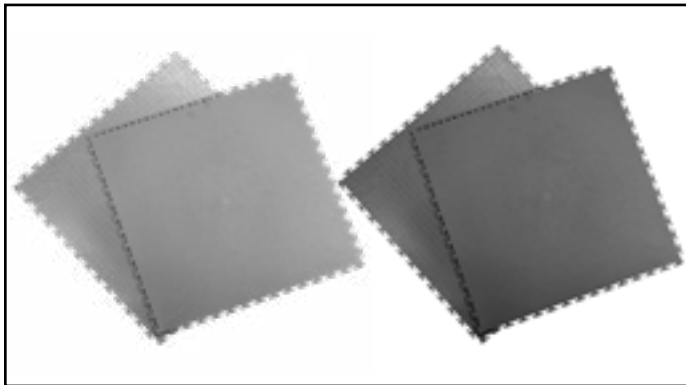


Figure 1. 6900 Floor Tile (Gray), 6903 Floor Tile (Dark Gray)

Receiving and Storing 6900 Floor Tile

6900 Floor Tile is shipped in boxes containing ten tiles. Stack the boxes of tiles (or loose tiles) on a flat surface with the edges of the boxes flush to one another. Overhanging edges will cause difficulty when installing. Never store the tiles upright. Allow the tiles to acclimate to the installation environment for 48 hours.

Preparation

6900 Floor Tile may be installed over concrete, wood, asbestos tile, rubber, vinyl, composite tiles and other standard floors. 6900 Floor Tile is not recommended to be installed over carpets or any floor that is designed to compress or move, i.e. cushioned sheet vinyl.

- Remove all debris. Sweep and vacuum as necessary.
- Repair any major surface imperfections (cracks over 3/8") in the sub-floor.
- It is recommended that the 6900 Floor Tile be installed over existing floors. Appropriate caution and procedures must be used in the event a preexisting

resilient floor covering is to be removed. Vinyl asbestos tile, asphalt tile, some asphaltic "cutback" adhesives and backings of many sheet vinyl floorings contain asbestos that is not readily identifiable. Unless positively certain that a product is asbestos free, you must presume it contains asbestos. Removal of these materials must comply with various federal, state and local regulations pertaining to the removal of in-place asbestos. Do not sand, dry sweep, dry scrape, drill, saw bead blast or pulverize any such existing product(s) unless you are certain they do not contain asbestos.

- Follow proper removal of pre-existing resilient floor, if there is a pre-existing adhesive it should be scraped and/or sealed with a barrier coat, such as Nu-Flor #500 from W.F. Taylor or an another similar sealant, prior to installation.

Grounding 6900 Floor Tile

It is recommended that a copper wire be placed every 1,000 sq. ft. throughout the installation. Run the grounding wire from the tile surface to an electrical outlet or other building ground. Grounding Kits can be ordered from Statguard Flooring: [46270](#) - FreeStyle 8400™ Interlocking Floor System Grounding System.

Tools

- Dead-blow hammer (21 to 42 oz) available at hardware stores (*Required*) **NOTE: Rubber mallets do not work**
- Utility knife and straight edge. (*Required*)
- Carpenter's square. (*Required*)
- Jig saw, orbital or similar cutting tool for irregular cuts. (*Recommended*)
- Table saw with a fine-tooth blade for making multiple cuts. (*Recommended*)
(*Safety devices must be in place and Manufacturer's instructions and safety precautions must be observed at all times while using power equipment*)
- 24" VCT tile cutter (*Optional*). A cutter can be purchased from Gunderlach Company, Model# H-24.
- For appropriate cutting methods, see "Cutting 6900 Floor Tile" section.

Planning and Installing

To ensure a square installation, locate the center of the room by snapping chalk lines between midpoints of both walls. Make certain that the lines are square with one another. This will create a cross that intersects at the center of the room.

Establish a starting point for the installation usually in the center of the room. See Figure 2 below.

- It is best to start at one side of the installation and work rows.
- Do not work off the wall, however. Instead, establish a straight line, square with the lines used to establish the center point of the room, spaced enough off the wall to allow for easy cuts.
- Loosely place tiles along each axis to make sure that narrow cuts will not be required along either edge of the space. Re-adjust the starting point if necessary to allow for the most equally spaced cut sizes along all walls.

Odd-Shaped Rooms: More planning may be required to minimize cuts and facilitate installation.

Large Rooms: It is best to start along the centerline of the shortest dimension and first work toward one wall, then the other wall. If it is desired to have an interlocking transition strip at a particular point in the installation i.e. a door or entryway, adjust starting point to accommodate transition pieces. Account for transition and its' position prior to installing tile.

Establish a straight line from the starting point and snap another straight-line square with the existing chalk lines to follow. Make certain that the first row of tiles installed follows this line exactly.

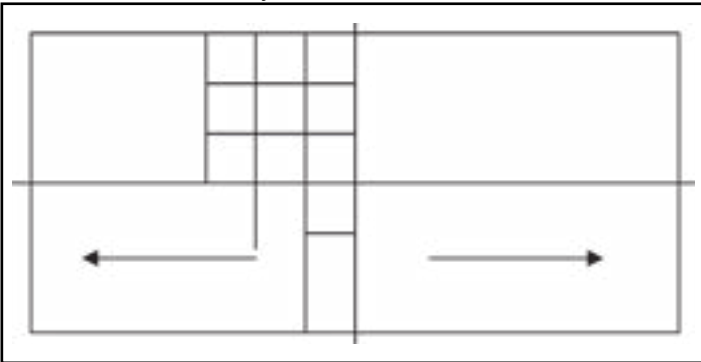


Figure 2. Locating and marking the center of the room.

DO NOT SIT OR STAND ON TILES AS THEY ARE BEING HIT INTO PLACE. It is important that the tile is free to move as it is being hit into place so that it does not stress the interlocks.

DUE TO ANY RESIDUAL EXPANSION AND CONTRACTION THAT MAY OCCUR DURING INSTALLATION, CUT AND INSTALL ALL PERIMETER TILES AT THE END OF THE JOB. MAKE SURE TO

LEAVE A 3/8" GAP FROM THE EDGE OF THE TILES TO THE WALL, COLUMNS OR ANY VERTICAL OBSTRUCTION. Cover expansion spaces with specified cove base. When expansion cut is exposed, if desired, fill area with a matching colored silicon caulk to allow movement and prevent dirt accumulation.

When working with multiple installers, have the first installer start the first row. After he has installed three or more tiles, the second installer can start on the second row. After the second installer has installed three or more tiles on the second row, a third installer can start on the third row. Do not work on more than three rows at a time. This staggered installation procedure is intended to allow the tiles to naturally fit square to one another and to prevent any unnecessary tension in the tabs.

When installing the diamond top profile, take care to lay the tile down with the elongated part of the diamond facing in the same direction.

The 6900 Floor Tile is durable – but not indestructible. Care should be given not to scratch the tiles during installation, or after installation with furniture or equipment, etc.

Cutting 6900 Floor Tile

When cutting 6900 Floor Tile, the installer must exercise appropriate safety precautions. Protective eye wear and gloves must be worn. The following cutting tools are all appropriate tools for cutting 6900 Floor Tile:

- Utility knives or carpet knives with extra blades.
- A jigsaw or orbital saw can be used for shaped cuts.
- A straight edge and/or carpenter's square can be used to ensure straight and square cuts.
- 24" VCT tile cutter by Gundlach Company, Model # H-24.

If cutting with a knife score the tile until it is cut all the way through. Always follow the tool manufacturer's safety guidelines.

Transition Strips and Corners

Interlocking transition strips and corners are available through Statguard Flooring. Non-interlocking transition and edging units are available from other manufacturers such as Johnsonite and Mercer. WHERE HIGH TORQUE WHEEL TRAFFIC IS EXPECTED, IE, IN A GARAGE OR AUTOMOTIVE SERVICE BAY ENTRANCES AND EXITS USE OF A PERMANENTLY AFFIXED TRANSITION STRIP MAY BE REQUIRED TO DEFLECT LATERAL FORCES OF THE VEHICLE WHICH CAN CAUSE THE FLOOR TO MOVE. CONSULT WITH STATGUARD FLOORING IF YOU HAVE ANY QUESTIONS.

Gluing 6900 Floor Tile

The 6900 Floor Tile is designed to be free-floating system, requiring no adhesives. The 6900 Floor Tile will stay in place even under forklift traffic or other heavy-duty traffic. However, in areas where the floor is subject to high torque (e.g., carts with small wheels and heavy loads in narrow areas), it may be appropriate to mechanically fasten or fasten with adhesives. Call Statguard Flooring if you are considering the use of mechanical or adhesive fastening systems.

For permanent installations or areas apply quality vinyl tile adhesive with a 1/16" V-Notch trowel – placing the tile into the adhesive while it is still tacky without having skinned over. Follow the adhesive manufacturer’s safety and installation guidelines. Allow the adhesive to set according to the manufacturer’s guidelines.

Limited Warranty

Statguard Flooring expressly warrants that for a period of one (1) year from the date of purchase, Statguard Flooring products will be free of defects in material (parts) and workmanship (labor). Within the warranty period, a unit will be tested, repaired or replaced at Statguard Flooring’s option, free of charge. Call our Customer Service Department at (781) 821-8370 (Canton, MA) for a Return Material Authorization (RMA) and proper shipping instructions and address. Please include a copy of your original packing slip, invoice, or other proof of date of purchase. Any unit under warranty should be shipped prepaid to the Statguard Flooring factory. Warranty replacements will take approximately two weeks.

For unusual conditions or extraordinary installations contact Statguard Flooring for guidance: (781) 821-8370.

Item	Description
6900	Modular Conductive Interlocking Floor Tile, Flat, Gray, 23.75" x 23.75", Box/10
6901	Modular Conductive Interlocking Floor Tile, Transition Edge, Gray, 24" x 2.5"
6902	Modular Conductive Interlocking Floor Tile, Corner, Gray, 2.5" x 2.5"
6903	Modular Conductive Interlocking Floor Tile, Flat, Dark Gray, 23.75" x 23.75", Box/10
6904	Modular Conductive Interlocking Floor Tile, Transition Edge, Yellow, 24" x 2.5"
6905	Modular Conductive Interlocking Floor Tile, Corner, Yellow, 2.5" x 2.5"

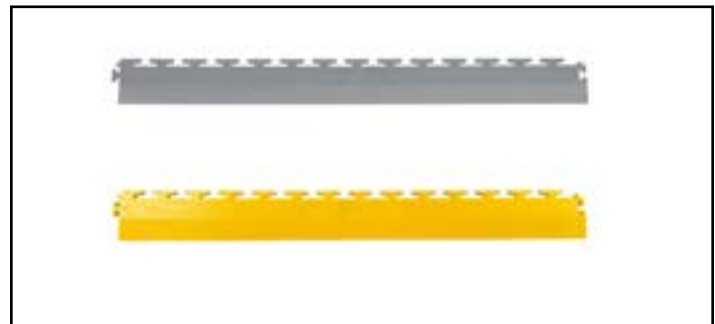


Figure 3. 6901 Floor Tile Transition Edge (Gray), 6904 Floor Tile Transition Edge (Yellow)

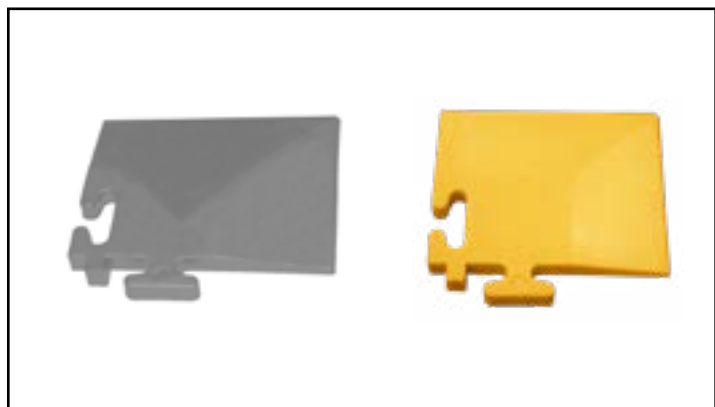


Figure 4. 6902 Floor Tile Corner (Gray), 6905 Floor Tile Corner (Yellow)