

ESD-Safe Part Bins

Protect parts from the damaging effects of static electricity.

ESD-Safe Part Bins are permanently molded in conductive material for use in cleanrooms and workstations. Combine Part Bins with ESD-Safe Metal Storage Systems to meet your work-in-process requirements. Contact your LEWISBins+ sales representative for more information on ESD-Safe Metal Storage Systems. Note: PB50 is not designed for use on hanging systems.



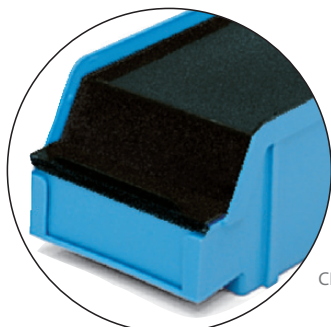
- > 8 sizes available.
- > Label insert area for easy identification.
- > Smooth gravity flow interior optimizes parts accessibility.
- > "X" designates molded-in dividers. Available on 6 models.
- > Bins hang on most louvered panels or rails.
- > Note: PB50 is not designed for use on hanging systems.

ESD-Safe Part Bins

Container Model	Outside Dimensions (in)			Inside Dimensions (in)		Hopper Height (in)	Weight (lb)	Carton Quantity	Flat Label ID Area (in)		Solid Covers
	L	W	H	L	W				W	H	
PB10	3.5	4.0	2.0	3.0	3.4	1.1	0.2	24	3.0	0.8	CPB10*
PB10X (with divider)	3.5	4.0	2.0	3.0	3.4	1.1	0.3	24	3.0	0.8	CPB10*
PB20	7.0	4.0	2.9	6.0	3.4	1.6	0.3	24	3.0	1.0	CPB20
PB20X (with divider)	7.0	4.0	2.9	6.0	3.4	1.6	0.3	24	3.0	1.0	CPB20
PB22	6.6	8.8	2.9	6.0	8.1	1.6	0.6	12	2.5	7.5	CPB22*
PB22X (with divider)	6.6	8.8	2.9	6.0	8.1	1.6	0.6	12	2.5	7.5	CPB22*
PB30	9.5	5.8	5.0	8.4	5.0	2.6	0.7	12	3.0	1.0	CPB30
PB30X (with divider)	9.5	5.8	5.0	8.4	5.0	2.6	0.8	12	3.0	1.0	CPB30
PB31	9.3	8.8	5.0	8.4	8.0	2.5	0.9	8	3.0	1.0	N/A
PB31X (with divider)	9.3	8.8	5.0	8.4	8.0	2.5	1.1	8	3.0	1.0	N/A
PB40	12.8	8.1	6.0	11.8	7.1	3.1	1.5	12	3.0	1.0	N/A
PB41	12.8	11.4	6.0	11.8	10.5	3.1	1.6	12	3.0	1.0	N/A
PB41X (with divider)	12.8	11.4	6.0	11.8	10.5	3.1	1.9	12	3.0	1.0	N/A
PB50	18.5	11.6	7.1	17.1	10.8	3.8	2.4	6	3.0	1.0	N/A

Available Stocked Material: ● XL Conductive

* Available on a make-to-order basis.
Note: Other ESD-safe materials available on a make-to-order basis. Please call for information.



CPB20

- > Solid covers are available to further protect parts by creating a Faraday Cage.

Dealer Contact Information