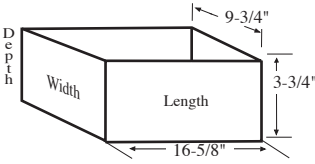


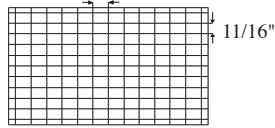
INPLANT HANDLER CONFIGURATIONS

4004-SA-1
16-5/8 x 9-3/4 x 3-3/4" ID.

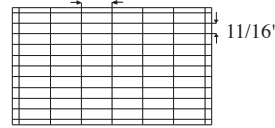
Partition Height
Short: 3-1/2"
Long: 3-1/8"



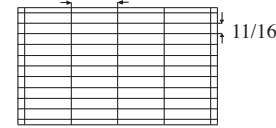
120 Cell Arrangement
Max Cell size 1-1/8 x 11/16 x 3-3/4"
13 Short Partitions - 11 Long Partitions
1-1/8"/ea.



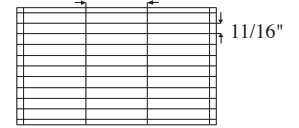
60 Cell Arrangement
Max Cell size 2-7/16 x 11/16 x 3-3/4"
7 Short Partitions - 11 Long Partitions
2-7/16"/ea.



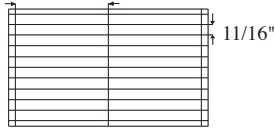
40 Cell Arrangement
Max Cell size 3-3/4 x 11/16 x 3-3/4"
5 Short Partitions - 11 Long Partitions
3-3/4"/ea.



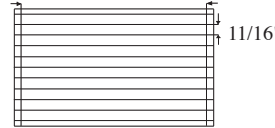
30 Cell Arrangement
Max Cell size 5-1/16 x 11/16 x 3-3/4"
4 Short Partitions - 11 Long Partitions
5-1/16"/ea.



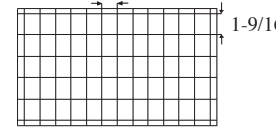
20 Cell Arrangement
Max Cell size 7-11/16 x 11/16 x 3-3/4"
3 Short Partitions - 11 Long Partitions
7-11/16"/ea.



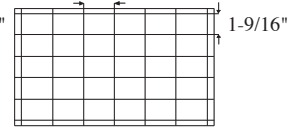
10 Cell Arrangement
Max Cell size 15-1/4 x 11/16 x 3-3/4"
2 Short Partitions - 11 Long Partitions
15-9/16"/ea.



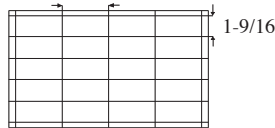
60 Cell Arrangement
Max Cell size 1-9/16 x 1-1/8 x 3-3/4"
13 Short Partitions - 6 Long Partitions
1-1/8"/ea.



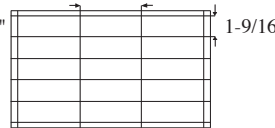
30 Cell Arrangement
Max Cell size 2-7/16 x 1-9/16 x 3-3/4"
7 Short Partitions - 6 Long Partitions
2-7/16"/ea.



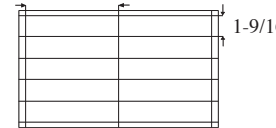
20 Cell Arrangement
Max Cell size 3-3/4 x 1-9/16 x 3-3/4"
5 Short Partitions - 6 Long Partitions
3-3/4"/ea.



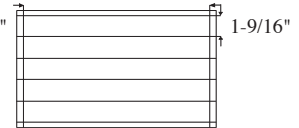
15 Cell Arrangement
Max Cell size 5-1/16 x 1-9/16 x 3-3/4"
4 Short Partitions - 6 Long Partitions
5-1/16"/ea.



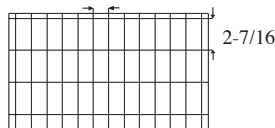
10 Cell Arrangement
Max Cell size 7-11/16 x 1-9/16 x 3-3/4"
3 Short Partitions - 6 Long Partitions
7-11/16"/ea.



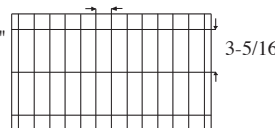
5 Cell Arrangement
Max Cell size 15-9/16 x 1-9/16 x 3-3/4"
2 Short Partitions - 6 Long Partitions
15-9/16"/ea.



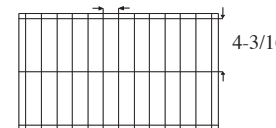
36 Cell Arrangement
Max Cell size 2-7/16 x 1-1/8 x 3-3/4"
13 Short Partitions - 4 Long Partitions
1-1/8"/ea.



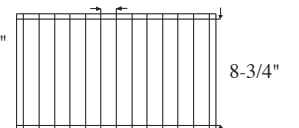
24 Cell Arrangement
Max Cell size 3-5/16 x 1-1/8 x 3-3/4"
13 Short Partitions - 3 Long Partitions
1-1/8"/ea.



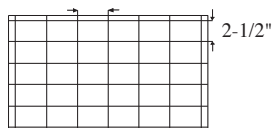
24 Cell Arrangement
Max Cell size 4-3/16 x 1-5/8 x 3-3/4"
13 Short Partitions - 3 Long Partitions
1-1/8"/ea.



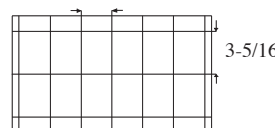
12 Cell Arrangement
Max Cell size 8-3/4 x 1-1/8 x 3-3/4"
13 Short Partitions - 2 Long Partitions
1-1/8"/ea.



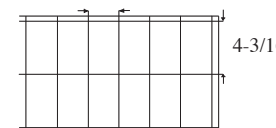
18 Cell Arrangement
Max Cell size 2-1/2 x 2-7/16 x 3-3/4"
7 Short Partitions - 6 Long Partitions
2-7/16"/ea.



12 Cell Arrangement
Max Cell size 3-5/16 x 2-7/16 x 3-3/4"
7 Short Partitions - 11 Long Partitions
2-7/16"/ea.



12 Cell Arrangement
Max Cell size 4-3/16 x 2-7/16 x 3-3/4"
7 Short Partitions - 3 Long Partitions
2-7/16"/ea.



6 Cell Arrangement
Max Cell size 8-9/16 x 2-7/16 x 3-3/4"
7 Short Partitions - 2 Long Partitions
2-7/16"/ea.

