



Tools for  
Advancing  
Innovation



Included  
Software

Mosaic 2.1

HDMI, USB  
and SD Card  
Outputs

Capture & Save  
Images Directly  
To SD Card

Auto  
Focus

Full HD  
1080p

60fps  
HDMI

30fps  
SD Card, PC  
and USB

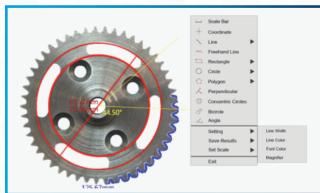
# Mighty Cam Pro

## Auto Focus HDMI/USB/SD

Aven's Mighty Cam Pro is an all-in-one inspection auto-focus camera. This camera offers both USB and HDMI outputs for inspection from an HD monitor or your PC via the included Mosaic software. This camera features integrated measurement capabilities for measuring without a PC. This camera also features a built-in SD card port for capturing instant high resolution images with no need for a PC.



## Integrated Measurement System \*No PC Required\*



Built in on screen tools provide powerful measurement functions including freehand line, rectangle, polygon, circle, bicircle, angle, point-line distance and much more. Three different length units of millimeter, centimeter and micrometer are provided to meet various measurement requirements in different applications. Simple calibration tool is also included.

## Mosaic Software Included

Compatible with Mosaic V2.1 Computational Imaging Software. Fast, efficient and worry-free is the core design concept of Mosaic V2.1 software. It adopts a new image "shooting-processing-measurement-reporting" function, modular design, and integrates various intelligent image processing algorithms. It is dedicated to providing users with more simple operation modes and improve work efficiency in all circumstances.

## Real-Time Image Stitching

It can generate large-sized mosaic images in a few seconds while moving the stage, which is light, smooth and worry-free! Real-time depth-of-field fusion.

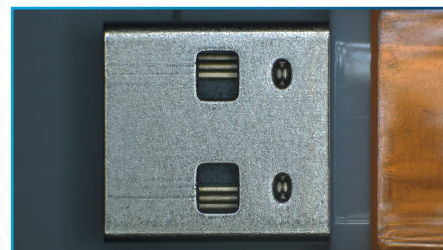
## Perfect Color Reproduction

Aven's color processing is capable of a new level of precision, matches the monitor image to the eyepiece view, produces extremely-high color definition.

Macro Lens



Macro Lens



Micro Lens



Micro Lens

